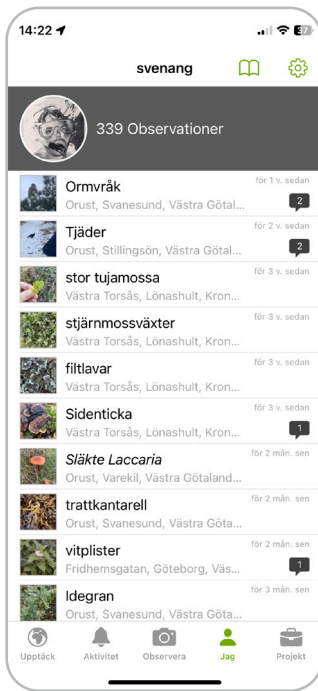


Documentation

IOS iNaturalist Classic (Swedish screenshots)

Get started reporting with iNaturalist

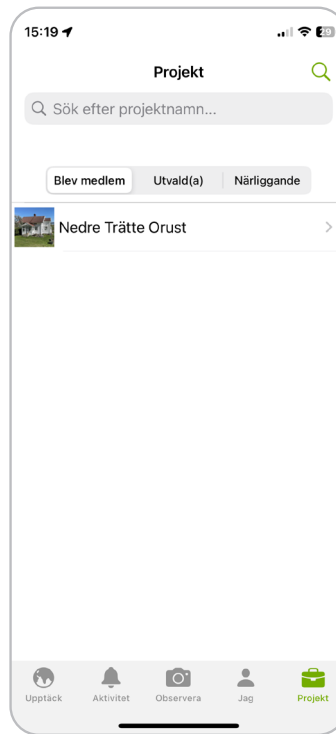
1



Connect to BiodivOcean project and start reporting.

Open your iNaturalist app. Press the Project button.

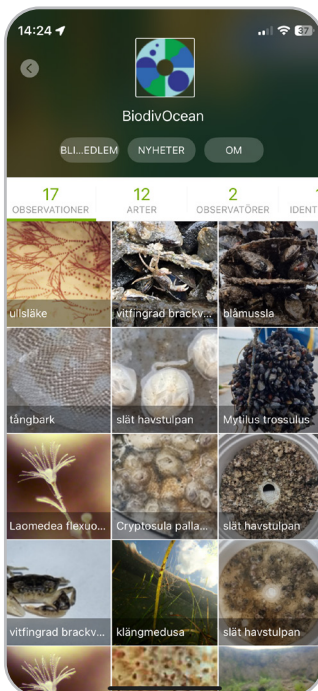
2



Search for BiodivOcean.



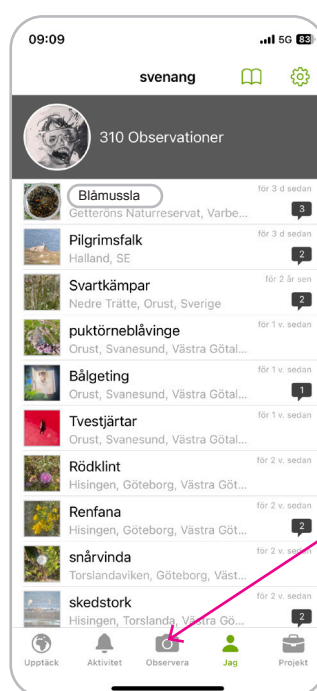
3



Press Member button. Now you are a member!

Ready for reporting!

4

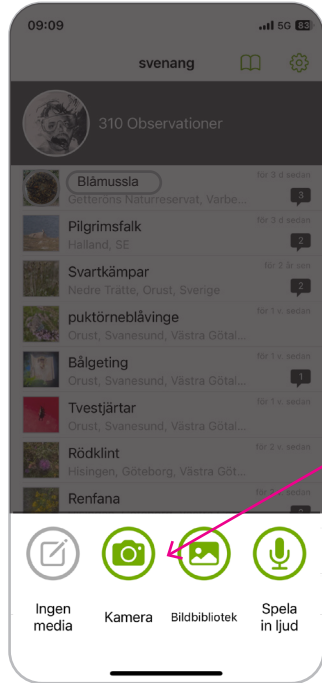


Press Observe

Documentation

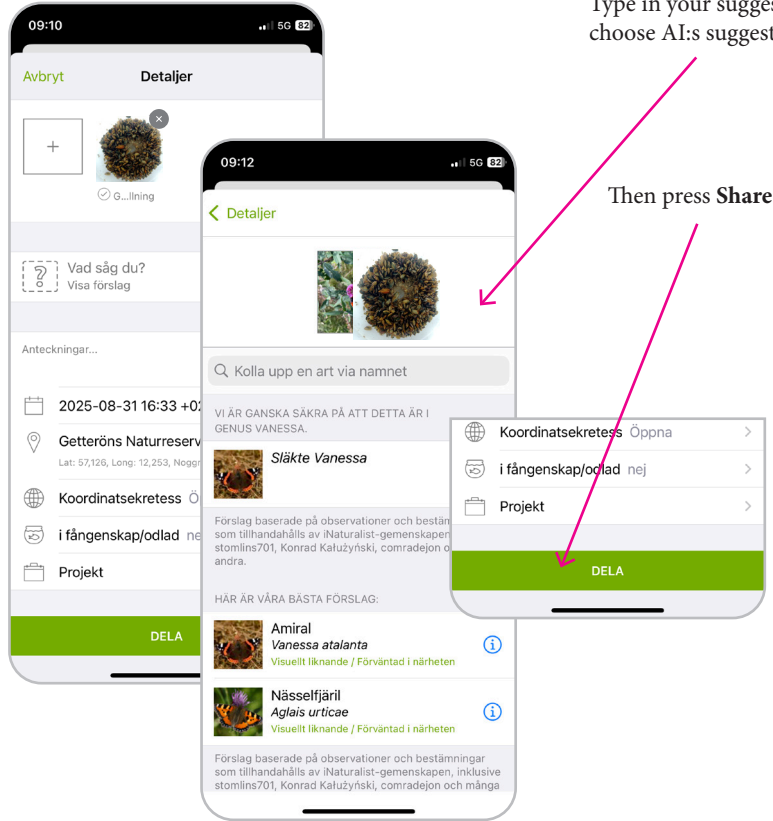
IOS iNaturalist Classic (Swedish screenshots)

5



Choose Camera or Your Image Librarie

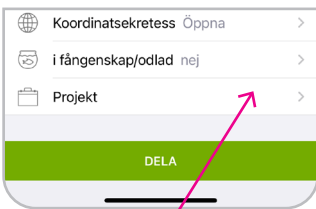
6



Type in your suggestion or choose AI:s suggestion.

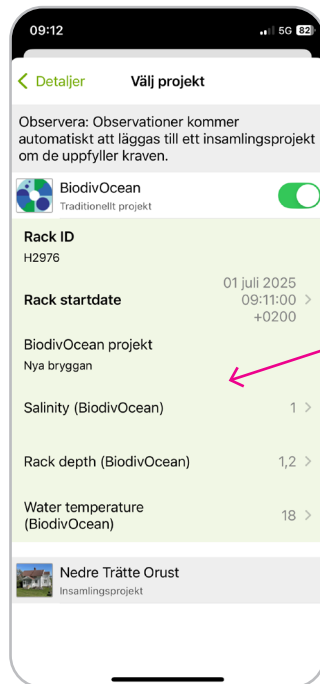
Then press Share.

7



To connect this observation to BiodivOcean project.

Choose **BiodivOcean** project here.



Fill in the two mandatory fields: **Rack ID** and **Rack startdate**.*

You can also fill in the other fields.

Finished!

Now you can see your observation in the app. You can also see the observation on our website. <https://biodivoccean.gmbl.se/observations>. Here we can see data from the extra fields.

* **Rack startdate** is the date when the rack was deployed in water.